

CE-Spaces4All:

Web accessibility viewer and accessibility data

Interreg
CENTRAL EUROPE



Co-funded by
the European Union

CE-Spaces4All

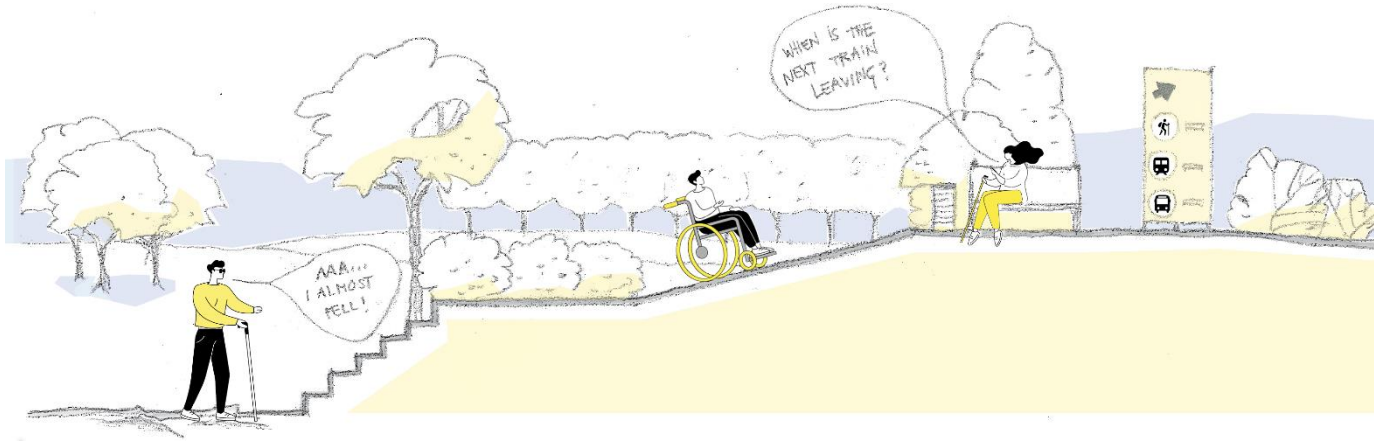
Public event “Spaces for All”

Znojmo | 21 May 2024

Maja Baloh

Geodetic Institute of Slovenia

Problem



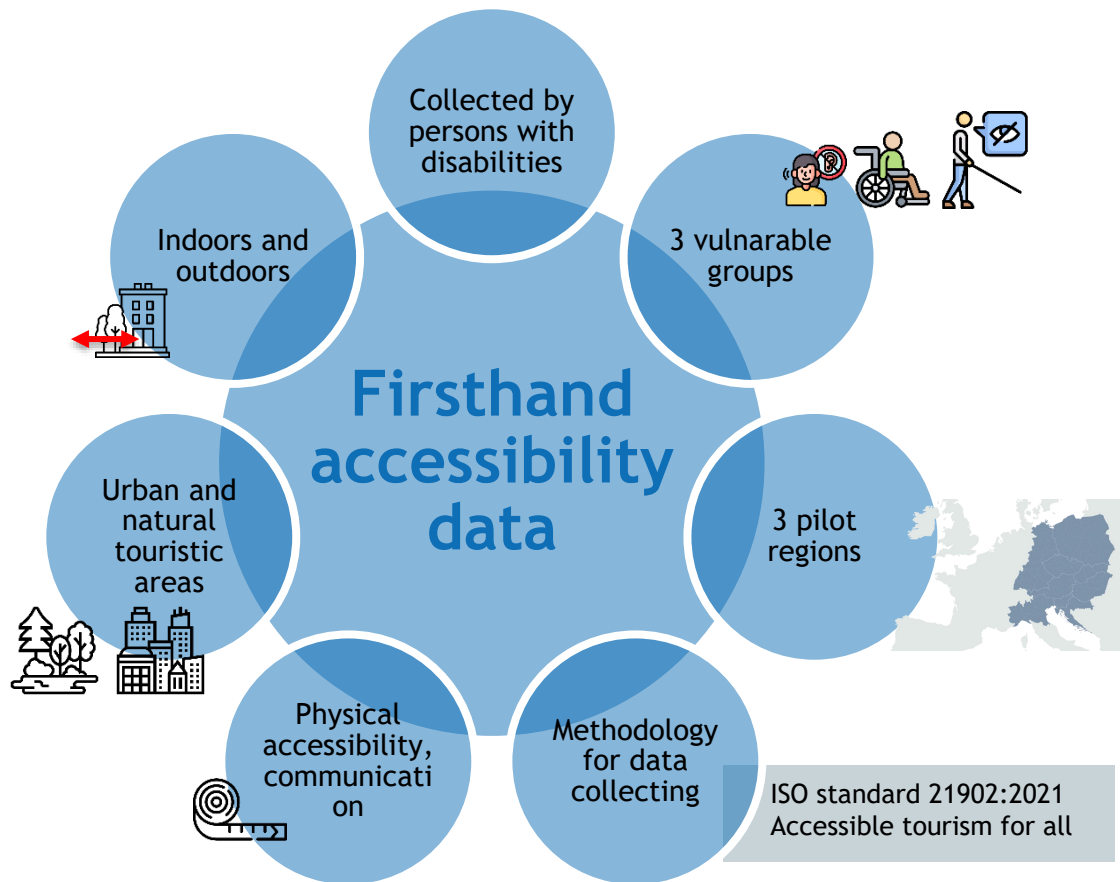
Accessibility is a fundamental right and a critical aspect of inclusive design - DESIGN FOR ALL.

Many public spaces and tourist destinations still present significant challenges for persons with disabilities.

Raising AWARENESS and sharing KNOWLEDGE about accessibility issues is crucial.

Accurate accessible DATA forms the foundation for meaningful improvements and evidence-based solutions.










Projects solutions:






Project solutions:

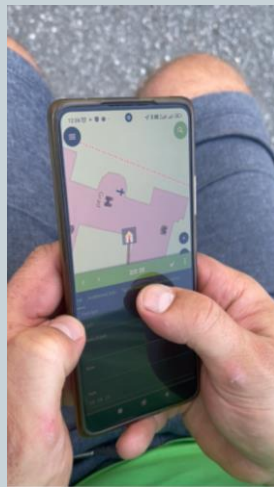
Firsthand accessibility data

Data categories:

-  Barriers
-  Parking places for disabled
-  Parking lot
-  Footpaths
-  Points of interests
-  Public transport stations
-  Audible pedestrian semaphores
-  Tourism facilities
-  Tactile Walking Surface Indicator (TWSI)

Assesment of data that is key to improve accessible tourism (tourism facilities, public stations):

-  Completely accessible
-  Accesible with assistance
-  Not accessible



Project solutions: Web Accessibility Viewer

Interreg
CENTRAL EUROPE



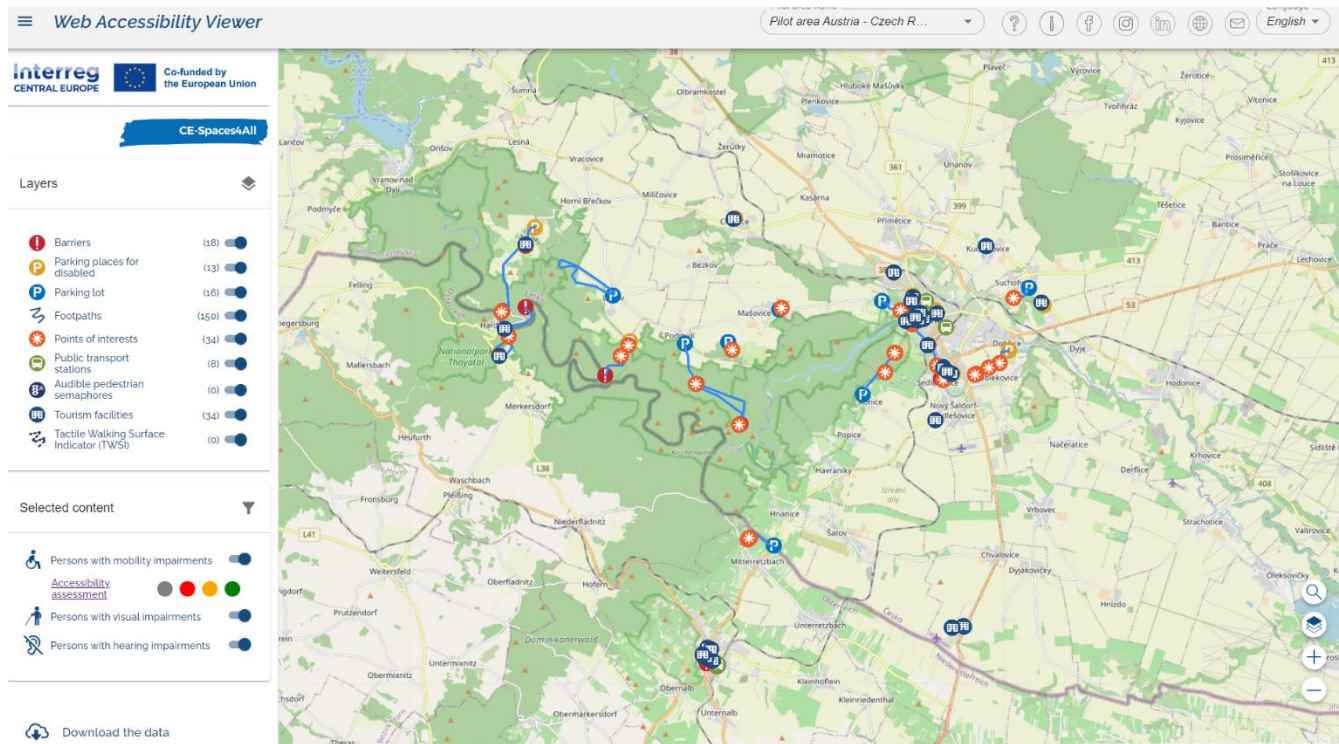
Co-funded by
the European Union

CE-Spaces4All

Online tool and a database enabling users free-of-charge **view** and **download of accessibility data**.

Designed for **policy planners** aiming to enhance governance for more accessible tourism.

Participatory approach.



Project solutions: Web Accessibility Viewer

Defined attributes and
images for objects.

1.400 captured
objects in total

Photos - key element
of data.

The screenshot displays the 'Web Accessibility Viewer' interface. The top navigation bar includes the Interreg Central Europe logo, the European Union flag, and the text 'Co-funded by the European Union'. The main header shows the project name 'CE-Spaces4All'. The left sidebar contains a 'Layers' section with various accessibility categories and their counts, and a 'Selected content' section with filters for different types of impairments. The main map area shows a detailed view of a location in the Pilot area Austria - Czech R... with a pop-up window for a specific object.

Layers

- Barriers (18)
- Parking places for disabled (13)
- Parking lot (16)
- Footpaths (150)
- Points of interests (34)
- Public transport stations (8)
- Audible pedestrian semaphores (0)
- Tourism facilities (34)
- Tactile Walking Surface Indicator (TWSI) (0)

Selected content

- Persons with mobility impairments
- Accessibility assessment
- Persons with visual impairments
- Persons with hearing impairments

Object Details:

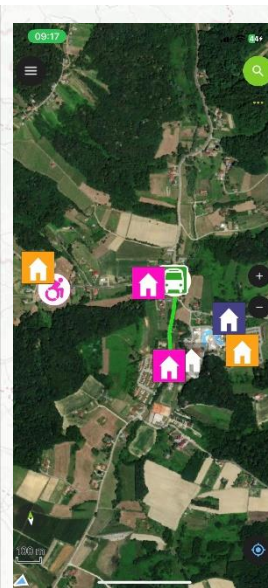
- Accessibility assessment: Fully wheelchair accessible
- Name: Premium hotel
- Address: Prašská 2133/100, 66002 Znojmo, Czechia
- Type: Accommodation
- Note: The bed in the accessible room is higher than recommended. One

Photo: Entrance to the hotel - automatic doors.

Benefits for municipalities

Municipalities can use collected accessibility data in various ways to improve the quality of life for all residents and create more inclusive environment.

- Implementation of data into their GIS
- To remove barriers in public spaces, ensuring accessibility standards
- Analysis of data
- Implementation of data into territorial tourism strategies and action plans
- Comparison of data
- Capacity building
- Collaboration to enhance data in WAV



Benefits for other stakeholders

Tourist providers and tourist boards

- Promotion of accessible tourist attractions
- Support of local businesses to make premises accessible (providing knowledge and testing on the field)
- Stand out as a leader in accessibility and get positive reviews and increase visitor numbers

Disability organisations

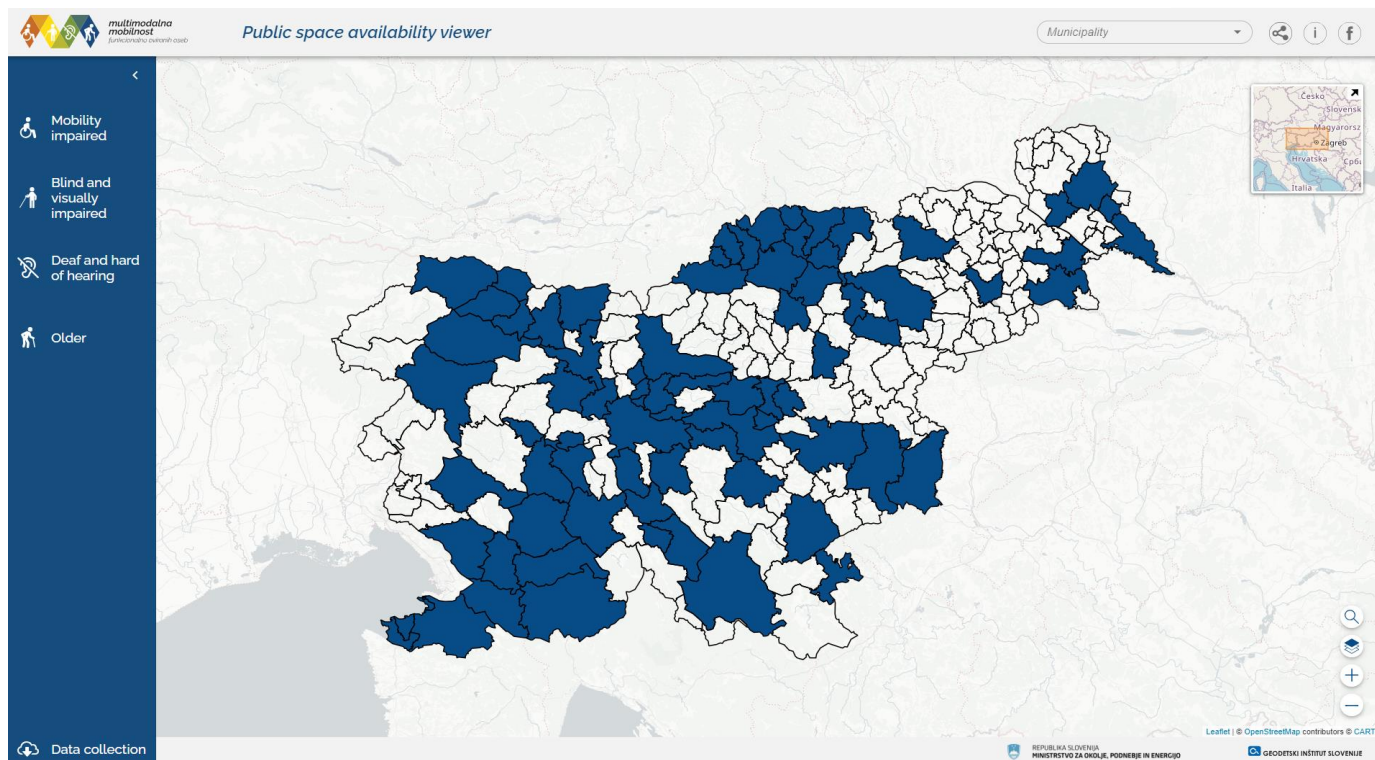
- To learn and share awareness about good practice examples in local areas or cross-border.

Wheelchair users

- Planning preparations for their travels



Enabling multimodal mobility of persons with disabilities



Slovenian project:

2016- 2024 -...

80 municipalities
included

50.000 objects
captured

<https://pregledovalnik.dostopnost-prostora.si/>

We invite you to partner with us by integrating the data and web accessibility viewer into your planning and operations.

Link to the viewer:
<https://spaces4all.gis.si/>



Thank you for your attention and time.

Maja Baloh



Geodetic institute of Slovenia
Jamova 2, 1000 Ljubljana



www.gis.si



maja.baloh@gis.si

